

Website User's Manual – Client Information

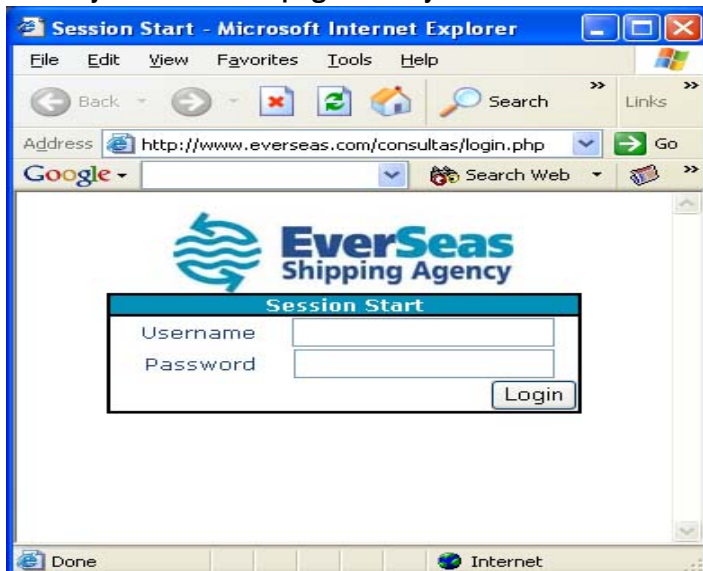
This restricted section of the website is intended to bring all the information about your shipping to your PC worldwide. To access the client information area, click on the button marked below.



This will take you to the Client Login screen in the following address:

<http://www.everseas.com/consultas/>


You may bookmark this page for easy access later on.





On the login page, you must enter the username and password provided. (This password differs from the camera username/password). If you forgot your password, send an email to contact@everseas.com asking for it.

After logging in, you will have access to the following information:

| | |
|---|--|
|  <p>EverSeas Shipping Agency</p> <p>Demo</p> <p>Online Services » Quote/Order History » New Quote</p> <p>Live Surveillance » PTZ Camera</p> <p>General Info » Puerto Quetzal Port Info » Everseas' fullstyle</p> | <p>Welcome to Everseas' Client Information! In here you will find all the information to keep you up to date with the status of your orders, vessels and quotes. You will also find general information that will help you plan ahead and make your shipping experience a more enjoyable one. We also have the live camera so that you can watch your vessel load in real time and loading information and statements of facts.</p> <p>Quote/Order History On this section, you will be able to see your pending quotes (if any) and also a list of all the orders you have placed with Everseas. Inside each order, you can check the vessel loading status, the associated quote for this order and the details (including Statement of facts, BLs, etc)</p> <p>PTZ Camera Live camera that can be panned, tilted and zoomed to check the local status of the vessel. (This can only be checked during your vessels.)</p> <p>Guatemalan Ports Contains a list of ports with specs and description of each port.</p> |
|---|--|

© 2004. All rights reserved
[Compuservice Webdesigns](#)

- **Quote/Order history:** You can view quotes that are still pending and also a history of orders placed with our shipping agency over time. You can see the associated quote for your orders, statements of facts, bls, etc.
- **New Quote:** An easy to fill form to request a new quote for our services.
- **PTZ Camera:** Access to the online camera (only if you have an active vessel at the time).
- **Puerto Quetzal Port Info:** General interest information to plan your vessels and port characteristics.
- **Everseas' fullstyle:** Full contact information, both in Guatemala and in Port, and bank account information for transfers.

Quote/Order History

Pending Quotes

No pending quotes for this client at this time.

Order History

| Date | Vessel | Status | Quote | Loading Status | Details |
|------------|-------------|---------|-----------------------|----------------------|-------------------------|
| 2004-08-06 | EXPLORER II | pending | Quote | View | Details |

This is the main screen there are all the details for the orders. If you click on the "Quote" link, you can access the associated Quote for this order. If you press the "View" link, you get the Loading




Status (if any) for this vessel in real time. You can see how much time it spent loading, and the loading efficiencies for this vessel.

In the “Details” link you get information about times, statements of facts, bls and general information for the vessel.

New Quote

This is a section where the clients can fill out the vessel data to get a quote from Everseas.



Cargill International S.A.
[\(click here to log out\)](#)

Online Services
» [Quote/Order History](#)
» [New Quote](#)

Live Surveillance
» [PTZ Camera](#)

General Info
» [Puerto Quetzal Port Info](#)
» [Everseas' fullstyle](#)

Online Quote
Please provide us with the most information as possible to make your quote the most accurate possible.

| | | | |
|-------------------|-------------|---------------|--|
| Vessel Name | | Master's Name | |
| dwat | | draft | |
| flag | AFGHANISTAN | built | |
| loa | | beam | |
| gear | | telex | |
| MT to load/unload | | eta | |
| IMO # | | Register # | |
| ISS Code | | Voyage # | |
| GRT | | NRT | |

© 2004. All rights reserved
CompuService Webdesigns

In here, you just have to fill out the information and press the send button. A confirmation email will be sent to your registered email address.

PTZ Camera

This feature is only available to active clients. If you are an active client, you can [request a username/password](#) for this specific vessel. Once the vessel has left the port, the username and password will be deactivated until another ship arrives.

Instructions:



When prompted for username/password enter the information sent to you via email.

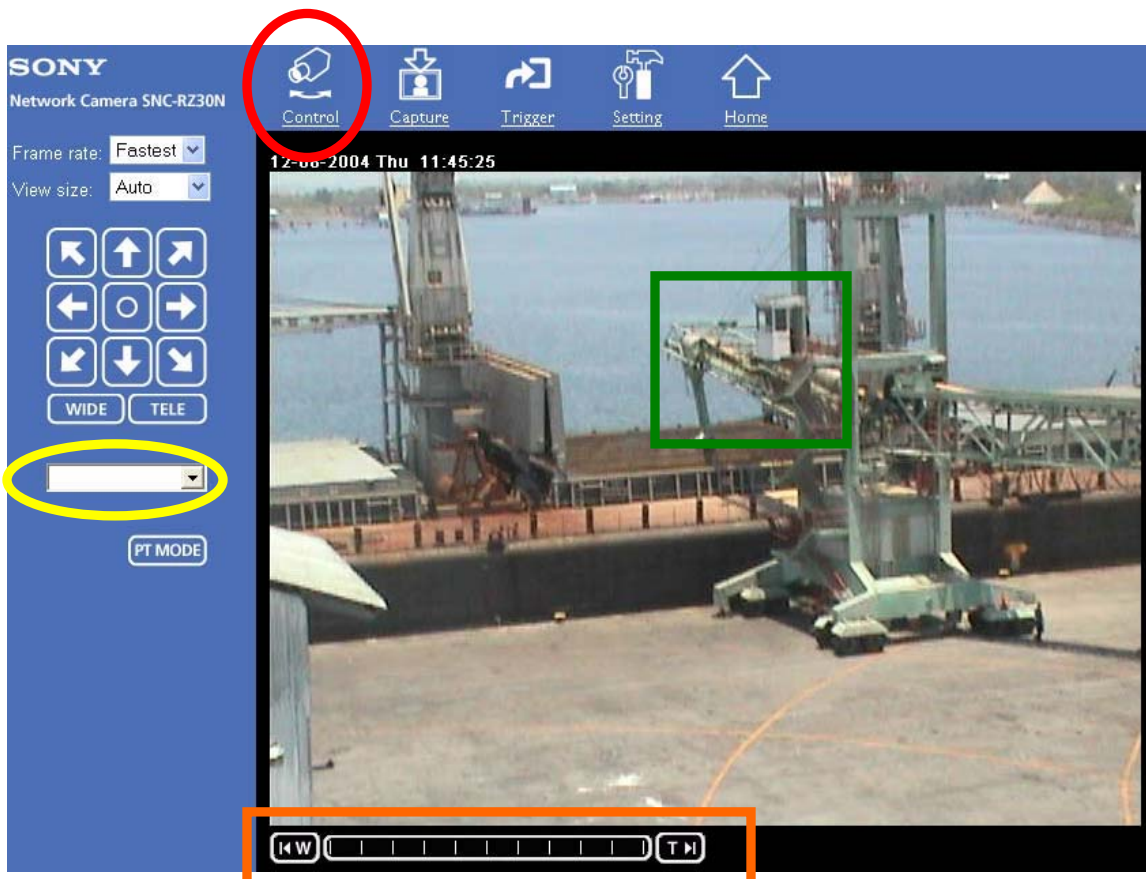
The dialog box titled "Enter Network Password" contains the following fields and buttons:

- Text: "Please type your user name and password."
- Site: everseas.com
- Realm: Sony Network Camera SNC-RZ30
- User Name: [Empty text box]
- Password: [Empty password box]
- Buttons: OK, Cancel

Wait a few minutes for the Active X plugin to download, and press YES when prompted to install the plugin.

To control the camera's Pan, Tilt, Zoom features, press the "Control" icon on the top menu of the camera. (you need to have Java installed on your system). **(Marked by the red circle in the example)**

If asked again for a username/password, enter the same information as in step 2.



Tips:

1. The camera has pre-recorded positions, where you can focus on any of the 3 docks. This can be found in the CONTROL section, right below the control arrows. (marked by the yellow circle)
2. Drawing a window on the camera's main image to zooms and centers the image (press and hold the mouse's left button (marked by the green rectangle).
3. You can move within the camera's reach by clicking with your mouse on the edges of the image.
4. Use the W - T bar below the image to zoom in and zoom out to a certain percentage (marked by the orange rectangle).